

LDR HEADWALL



BASIC CONSTRUCTION

Cabinet is constructed of decorative plastic laminate, thermofoil or wood veneer. The unit shall be factory assembled to include mechanical and electrical components as shown on the plans, and specifications are wired in accordance with shop drawings. The electrical contractor provides primary electrical conduit runs to the unit. All terminations shall be in the wall compartments. All secondary wiring within the wall unit enclosure shall be enclosed in fixed wiring raceways and conduits. All wiring shall be marked to facilitate easy circuit identification. Removable panels shall be finished with high-pressure plastic laminate, thermofoil, or wood veneer on the outside face. The panel allows users to access services, hook ups, and easier upgrades. The hospital or architect can select from many colour selections for the plastic laminate and thermofoil.

COMPONENTS

Medical Gas Station Outlets. Medical gas outlets shall be indicated in plans and specifications. Interspec will factory install, manifold and test in accordance with the outlet manufacturer's requirements. The mechanical contractor will bring the primary supply lines of the medical gases to the singular terminal connections at locations shown on the drawings.

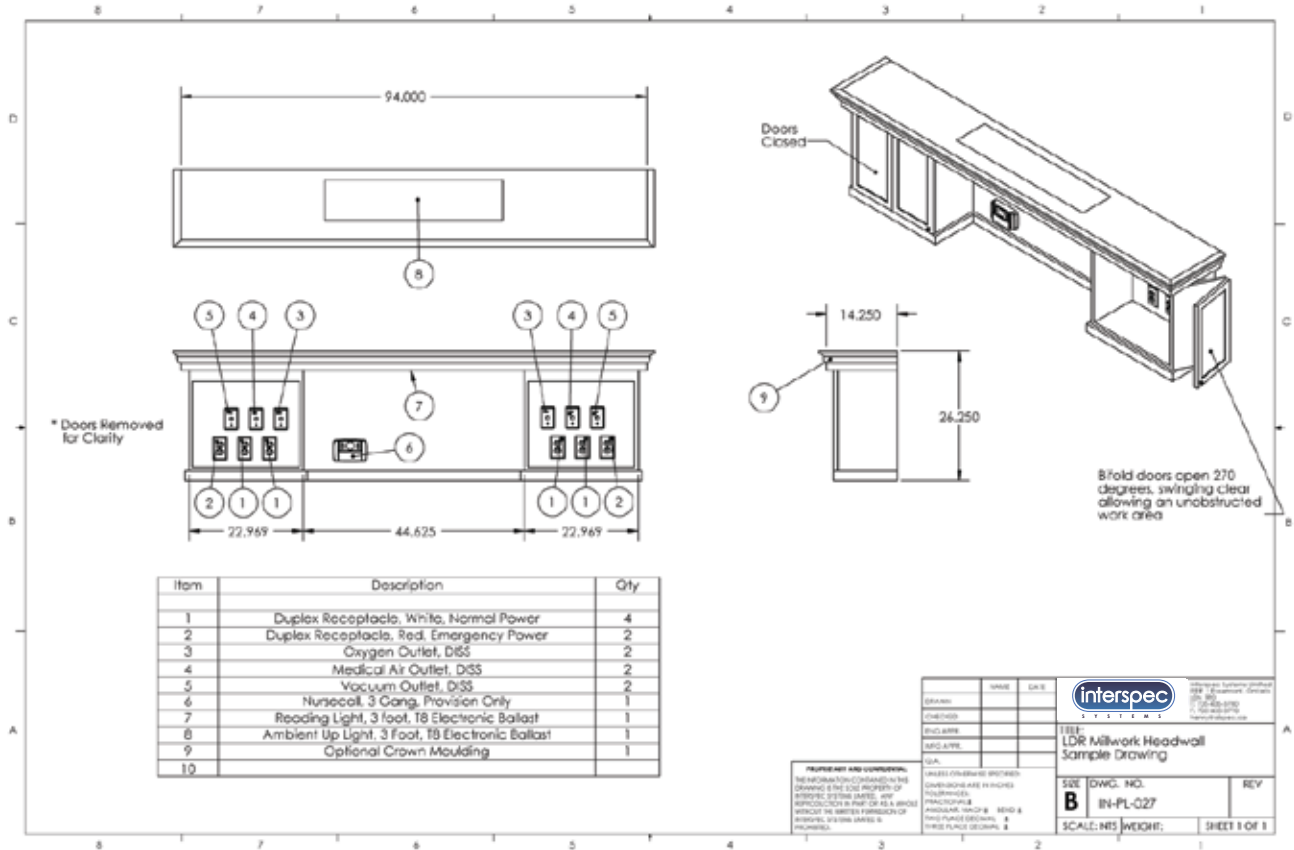
Interspec System LDR Headwall shall be built in accordance with specified shop drawings and documents.

Continued on Back...

LABOUR
DELIVERY
RECOVERY
HEADWALL

SUPERIOR
HEADWALL
SYSTEMS

interspec
S Y S T E M S



*Due to constant product development, features and specifications are subject to change without notice. Please contact Interspec for the latest information and configurations.

Power Outlets

Receptacles shall be the type and quantity as shown on the drawings and specifications. Unless otherwise noted 2 poles, 3 wires, rated at 15/20 amperes, 120 Volt, Hospital shall be provided.

Internal Ground Bus

A ground bus shall be included with a minimum of #6-screw type. The ground bus assembly shall also provide a positive means for grounding the wall.

Switches

Shall be as shown on drawings, 277 VAC 20 Amp "Specification" Grade.

Grounding Jacks

Externally accessible grounding jacks shall be provided in the LDR headwall, when specified, as shown in the shop drawings. The solid brass receptacle shall be enclosed in a non-conductive housing, shall be spring loaded and shall be manufactured to the requirements of NFPA 99.

PROVISIONS FOR

Nurse Call Equipment, Code Blue and Telephone Provision. Accessory items shall be installed in accordance with the manufacturer's instructions. The installation shall take place under the direction of the hospital.

Interspec Systems
 995841 Mono/Adjala Townline
 RR#1 Rosemont
 Ontario, Canada
 L0N 1R0

Toll free: (866) 888-8981
 Tel: (705) 435-3780
 Fax: (705) 435-3770
 e.mail: info@interspecsystems.com
 www.interspecsystems.com

