

CLASSROOM CONTROL PANEL

Section 10 or 16 - Control Panels

1. Provide surface mounted Classmate control panels as detailed on the drawings, and specified herein as manufactured by:

Interspec Systems Limited

Rosemont, Ontario

Tel: 705-435-3780

Fax: 705-435-3770

Website: www.interspecsystems.com

2. Specified Manufacturers products establish minimum standards and shall be base bid as an alternate price proposal.

3. Control panels shall be constructed of a structurally sound 6063 T5 Alloy satin anodized aluminum frame, .08MM thick with high pressure plastic laminate faced panels of lightweight particle core and a .5mm plastic laminate backing sheet. Plastic laminate colours are selected by the architect. They can be selected from standard furniture colour ranges.

COLOUR Websites

www.formica.com

www.arborite.com

www.pionite.com

www.wilsonart.com

4. Units to be complete with 1104 backboxes fabricated from heavy duty gauge satin coat steel with suitable barriers and continuous knockouts. Clear, smooth facias (faceplates) shall be prepunched to accept detailed components.

5. Recessed phone tubs shall be constructed of .050 satin anodized aluminum.

6. All panels shall be vandal resistant and removable with special tools for service access.

7. Panels to have all openings, mounting hardware, etc for services as required for installation of mechanical, and electrical services by division 15 and 16.

8. All units will be fabricated in accordance with reviewed shop drawings with extruded frames, and solid plastic laminate face panels.

ClassMate CLASSROOM CONTROL PANEL

16" CONTROL
PANEL



18" CONTROL
PANEL



12" CONTROL
PANEL



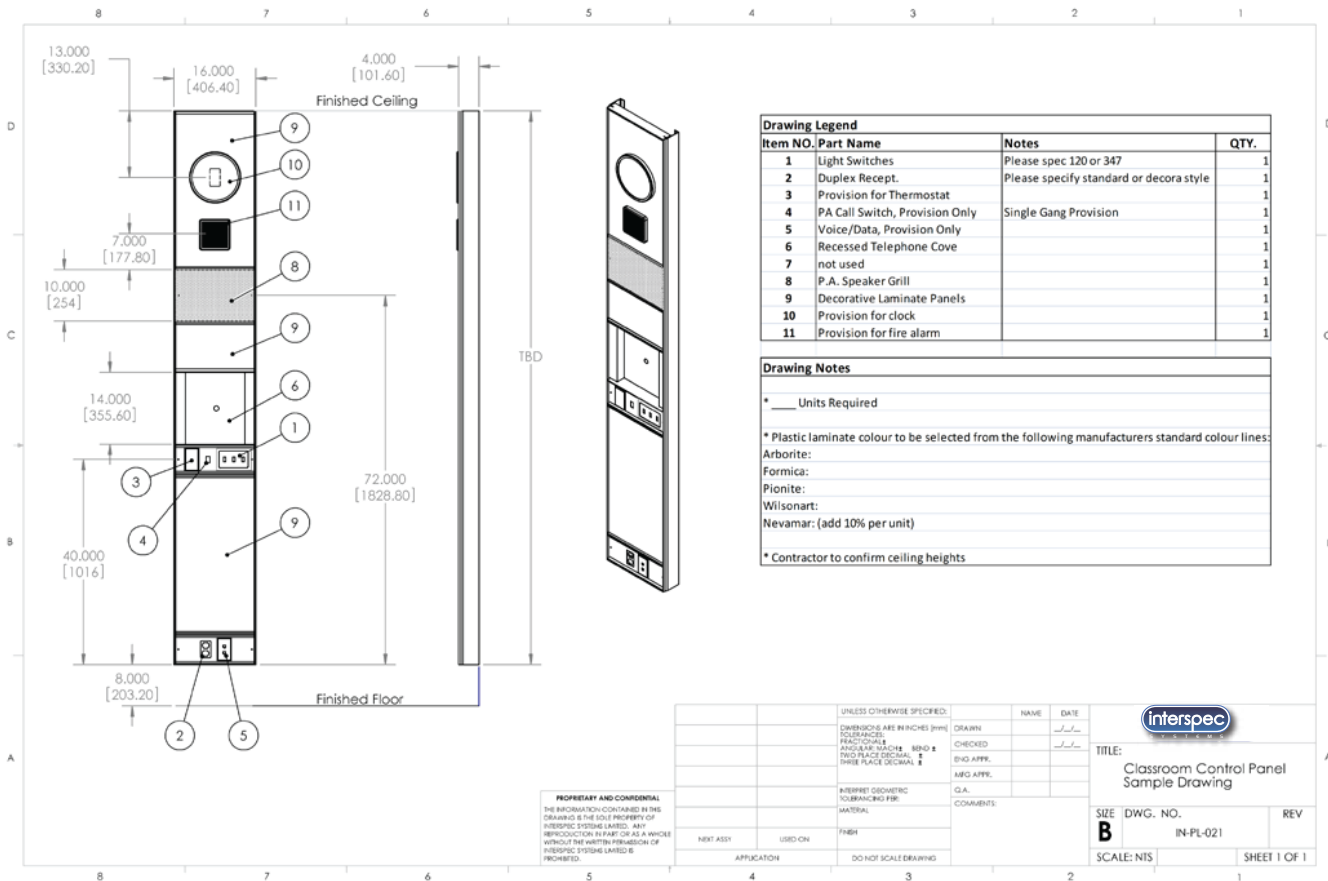
9. Units to be full height from 200mm off floor to underside of ceiling panels.

10. Part number CCP-16-04-KK
Classmate 406mm (16") wide
by 102mm (4") deep



Interspec Systems Limited 995841 Mono/Adjala Townline
RR1 Rosemont Ontario, Canada L0N 1R0 • Tel: (705) 435-3780
Fax: (705) 435-3770 • www.interspecsystems.com





All **Interspec** school control panel systems are custom-engineered for ease of installation, servicing and maintenance.

Interspec Systems
995841 Mono/Adjala Townline
RR# 1 Rosemont
Ontario, Canada
L0N 1R0

Toll free: (866) 888-8981
Tel: (705) 435-3780
Fax: (705) 435-3770
e.mail: info@interspecsystems.com
www.interspecsystems.com

interspec
S Y S T E M S